

INTERIOR DESIGN

Jeffrey Beers Reveals First of Three EchelonSeaport Towers in Boston

October 18, 2018

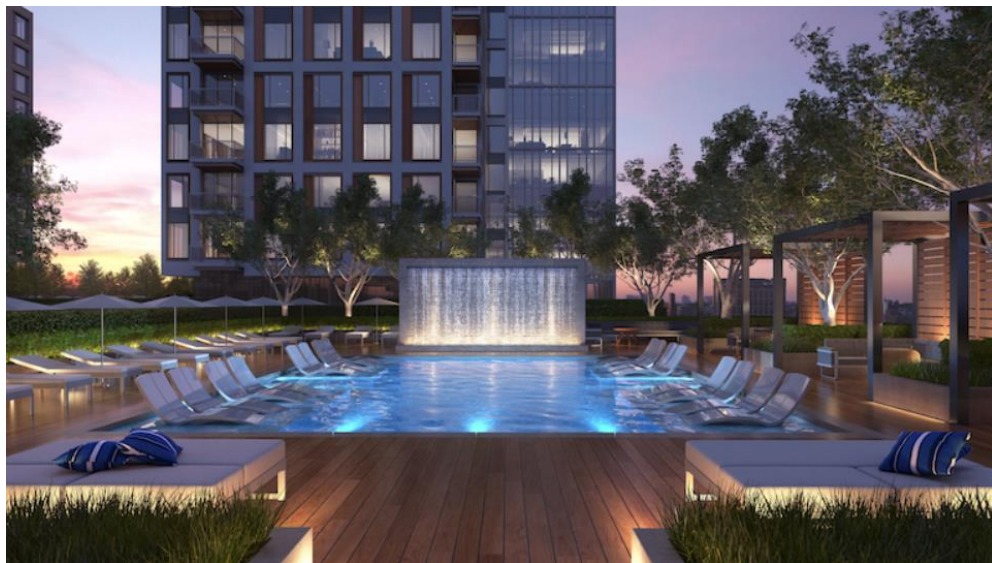


The wine room at 133 Seaport by Jeffrey Beers International.

Boston's [EchelonSeaport](#), a luxury residential complex, won't be completed until next year, but new renderings give an early look at the interiors designed by [Jeffrey Beers International](#). The complex will consist of three towers, anchored by a central courtyard, that encompass a whole city block in the Seaport District. JBI will shape over 60,000 square feet of amenity spaces, including lobbies and lounge areas, indoor fitness areas, and a sky lounge in each tower. The design channels Boston's timeless American style and Beers' experience in the luxury hospitality industry. Other members of the architectural team include Kohn Pedersen Fox and local firm CBT Architects, who collaborated on the exterior. Regent Hotels & Resorts will provide luxury services to the condominiums. Construction is expected to be completed by 2020.



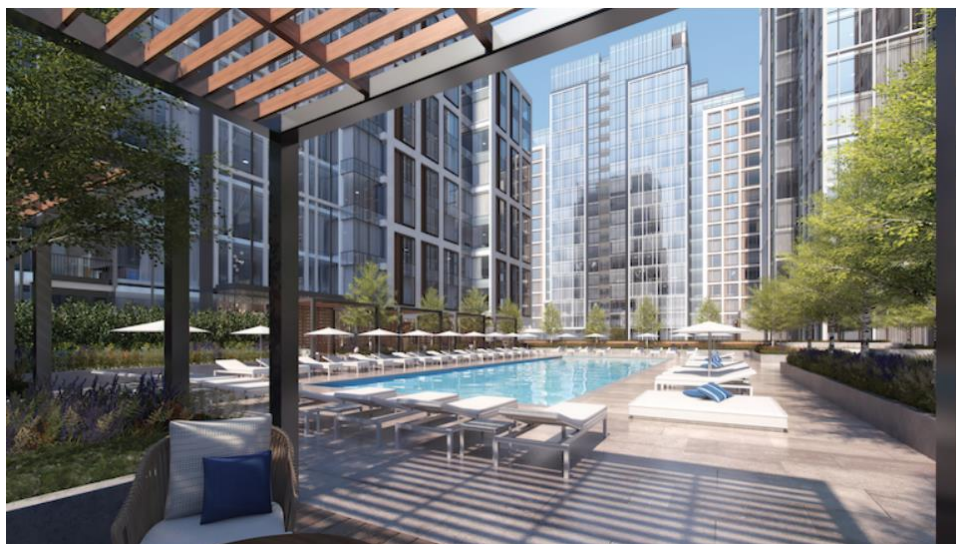
The sky lounge at 133 Seaport by Jeffrey Beers International.



An outdoor pool at EchelonSeaport by Jeffrey Beers International.



The indoor relaxation pool at EchelonSeaport by Jeffrey Beers International.



The grand pool at EchelonSeaport by Jeffrey Beers International.



The fireplace lounge at 133 Seaport by Jeffrey Beers International.



The library at 133 Seaport by Jeffrey Beers International.



The lobby at 133 Seaport by Jeffrey Beers International.



The lobby at 133 Seaport by Jeffrey Beers International.